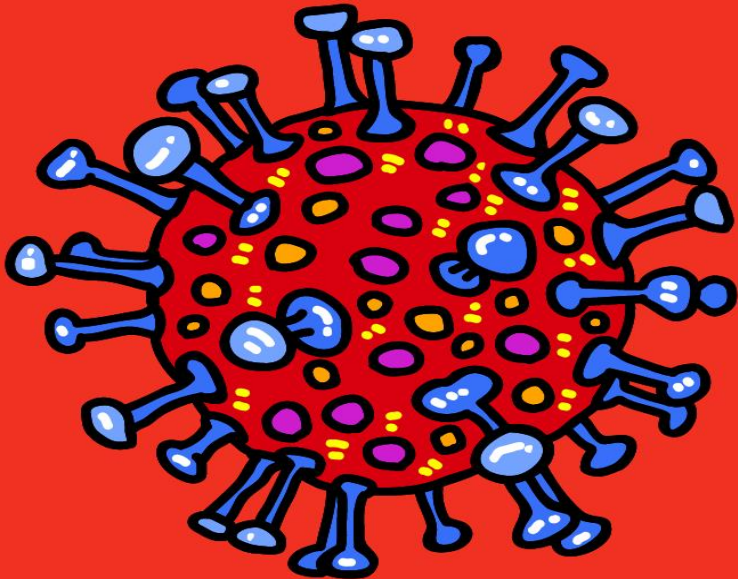


# Covid-19 Update Germany





## Covid-19 Update Germany January 2021

For many parents, the current situation is a challenge: kindergarten and schools in Germany were closed for a long time due to Corona measures.

In order to support parents even more, the German government has extended its monetary child sickness support in 2021 to further support working parents during the Covid-19 pandemic. The enhancements in child sickness support are highlighted due to the German government extending Coronavirus lockdown restrictions and imposing tougher measures until 31 January 2021.

Employees with children will be granted 10 additional days per parent, while single parents will receive an extra 20 days of leave at full pay. The benefit gives working parents more time to look after their children if they fall ill. The new extension will apply to scenarios where the care of the child at home is required because the school or kindergarten class or group is closed due to Coronavirus restrictions.

In addition, compensation payments are possible. The prerequisite for compensation of 67 percent of the loss of earnings is that children who have not yet reached the age of twelve, are disabled or dependent on assistance, are cared for by the parents themselves due to a lack of other reasonable care options. 67 percent of the loss of earnings is reimbursed, up to a maximum of 2016 euros per month. Payment is made by the employer, who can submit an application for reimbursement to the relevant state authority.

The German government is also requesting employers to introduce generous home office options to enforce the 'stay at home' message to employees across the country.